

Kapellenweg



General Information:

- Wild camping is strictly prohibited! - Please use the designated camping areas.
- **Respect nature!** The waste buckets and toilets are available for you: Please spare the landscape and the wild animals of your waste. **If you take it with you, you can bring it back.**
- Please use the visible trails and paths, don't take shortcuts, even if it's tempting, we do not want to harm the vegetation!
- Please **brush away any marks** you've left on the boulders and **only use brushes with natural bristles.**
- Please **do not clean new hold on the problems**, boulders can be climbed as they are.
- Fires are allowed at the official fireplaces
- Visitors of Saastal please **use the designated parking areas**, or use the public transport services.
- **Check the Top-Outs** of the boulders.
- Be aware, **you are climbing under your own risk!!**

Climbing information:

— : III - V

— : V+ - 6b+

— : 6c - 7a+

— : 7b - 7c

— : 7c+ - ...

- - - : Dyno

- - - : Traverse

?: Clean problems with no ascent

⚠ : High Boulder, Bad Landing ...

☆ : A superb problem.

★ : One of the best in Saastal.

👨‍👩‍👧 : Family Friendly Sector

👉 : Slap

👉 : Vertical

👉 : Overhang.

👉 : Roof.

👉 : Dyno.

Kapellenweg General Information:

In the early 1800s this area was used for climbing practice for alpine mountain expeditions, largely by English mountaineers. Here they would train with ice axes and crampons in preparation for their mountain missions. For that reason here you will find old rusty bolts and anchors, a prevalent reminder of this sectors history.

No longer used for alpine training the Kapellenweg sector is home to 47 superb boulder problems. The rock here is gentle on skin and the landings flat and grassy, ideal for beginners or the transition from indoor to outdoor. You can also climb

With the smallest routes topping out at a mere 3 meters this sector also accommodates for the little ones.

You should park in Saas-Fee CarPark or use the public buses to SaasFee (PostOffice).

To enter the sector you should use the CarPark elevator to Level -6. From there two minutes walk - the sector is just behind the CarPark, it starts at the end of the Van Parking.

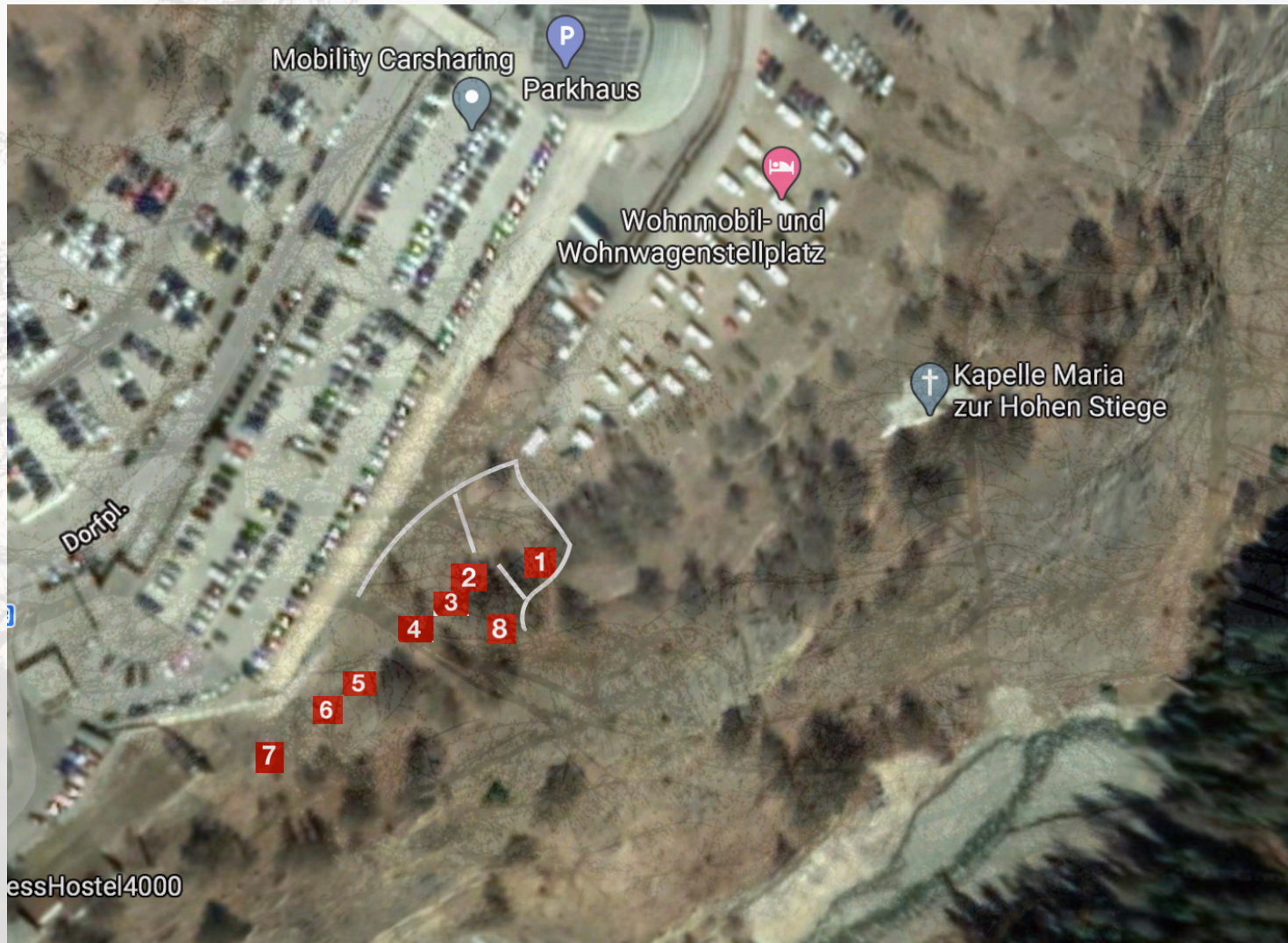
Best period to climb: You can climb during all seasons but the best moment is from **March/April** until **November** (depending on the snow falls).

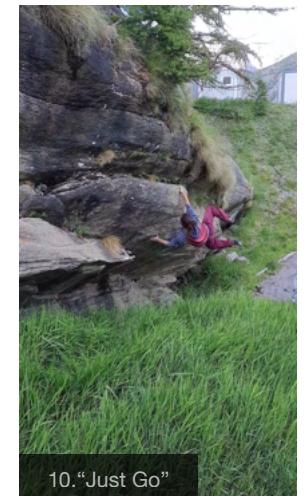
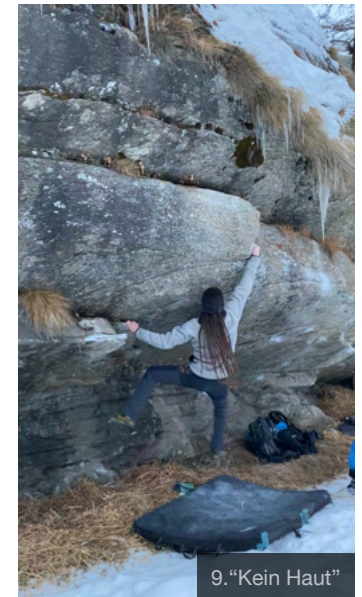
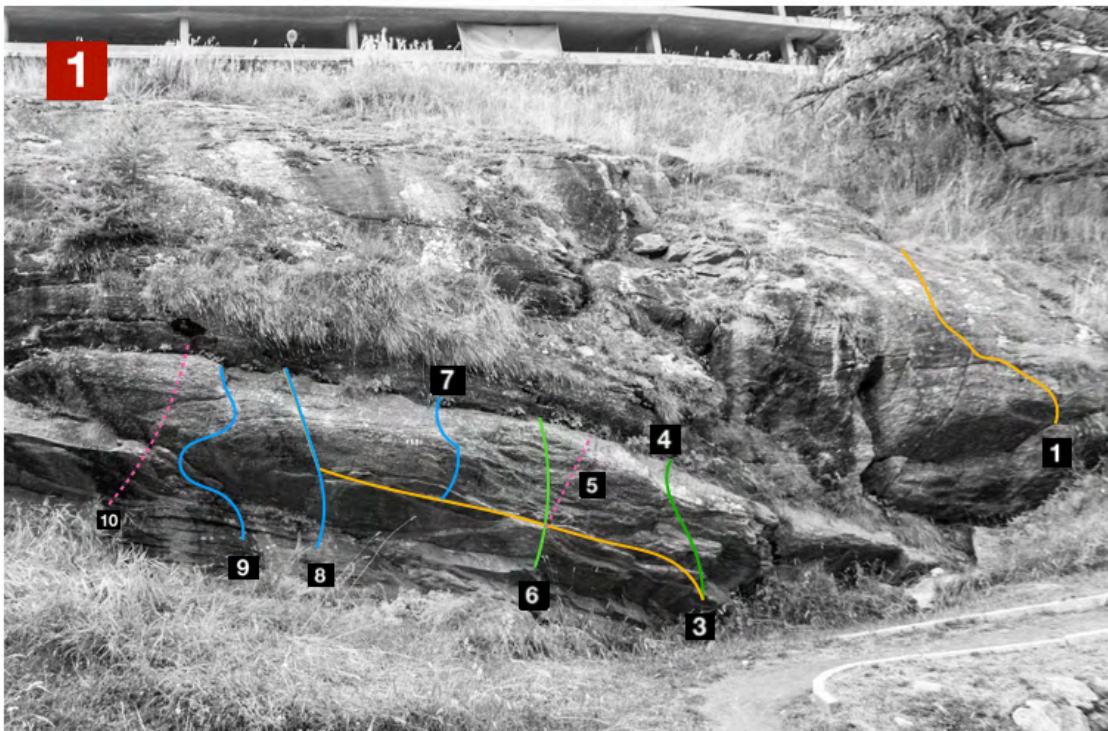
Furthermore, **avoid climbing some problems if you see there is wet conditions**, holds can break.

Please help keep the forest at it is.

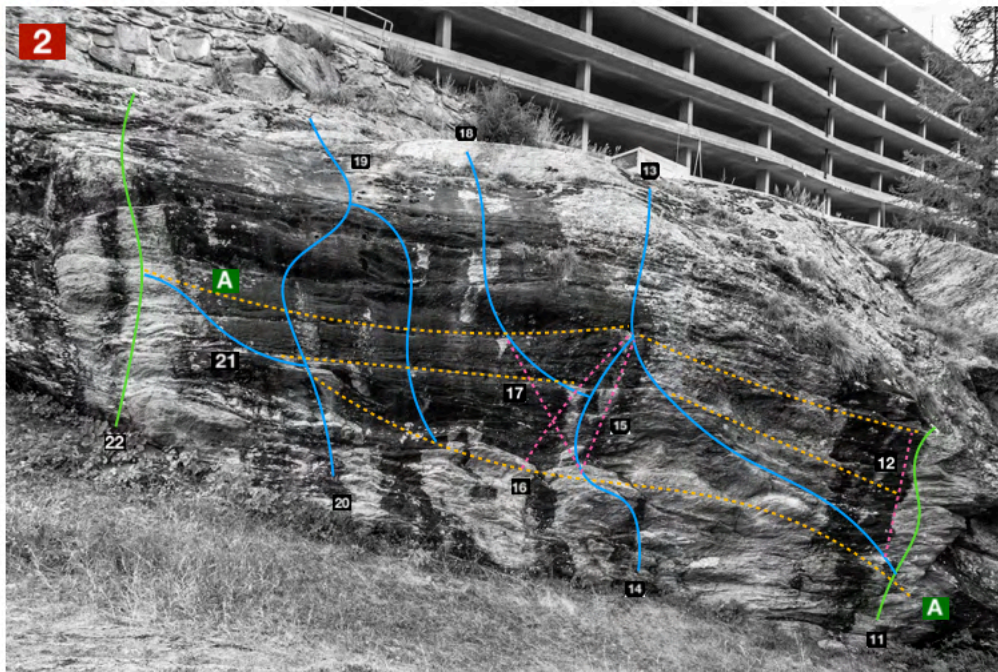
*For broken holds, grades and any other aspect related with the sector please contact us:
Boulderingsaastal@gmail.com or **instagram @bouldering_saastal***

KAPELLENWEG SECTOR:



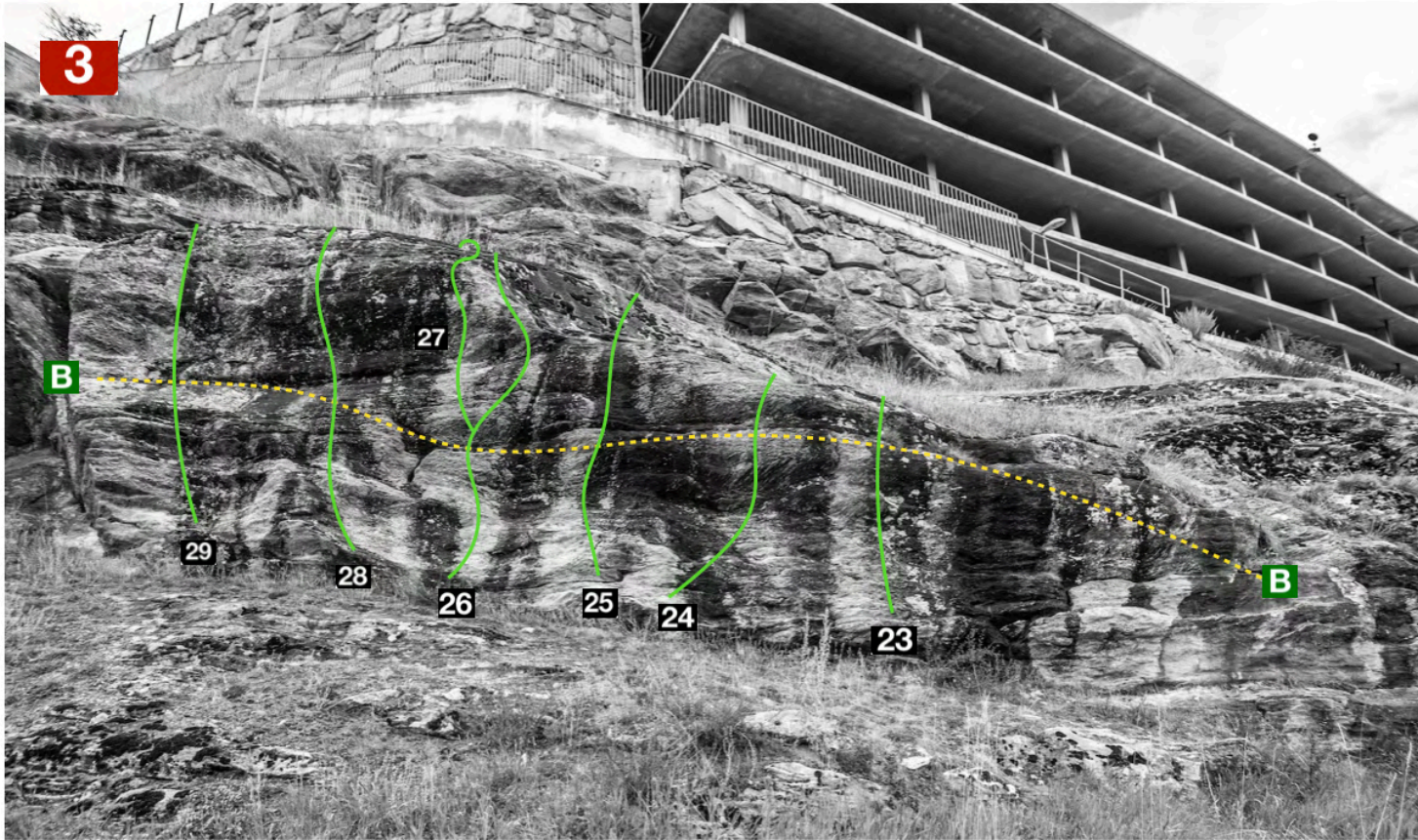


1	Fight for the top	Sit.	7a	☆
3	Kappelen Traverse	Sit. Start on 3 Finish on 8	6c 7a+	★
4	Apreta el culo	Sit.	V	
5	Cover your arms (Dyno)	Sit. Starts in 6	7a	
6	Just get it	Sit.	IV+	
7	Eine Crimp	Sit.	6b	
8	Spring time	Sit.	6b+	
9	Kein Haut	Sit. Sit. Without using big left hold	6a+ 6b	☆
10	Just go (Dyno)	Sit.	6c	☆



11	A Bugs Life	Sit.	V		
12	Ratatouille (Dyno)	Sit. Starts in 11 Sit. (Low)	6a+ 6c		
13	Brave	Sit. Starts in 11	6a+	⚠	☆
14	The Incredibles	Sit. Starts in 14	6a	⚠	★
15	Coco (Dyno)	Sit. Starts in 14	7b	⚠	★
16	Domingos al Sol (Dyno)	Sit. Starts in 14	7b/+	⚠	
17	Zootopia (Dyno)	Sit. Starts in 14	6c	⚠	
18	Pocahontas	Sit. Starts in 14	6a+	⚠	
19	Inside Out	Sit. Starts in 14	6b	⚠	
20	The Aristocats	Sit.	6b	⚠	
21	Bambi	Sit. Starts in 11	6b	⚠	
22	Monsters, Inc.	Sit	6a/+	⚠	☆
A	CarPark Travers	-	-	⚠	☆

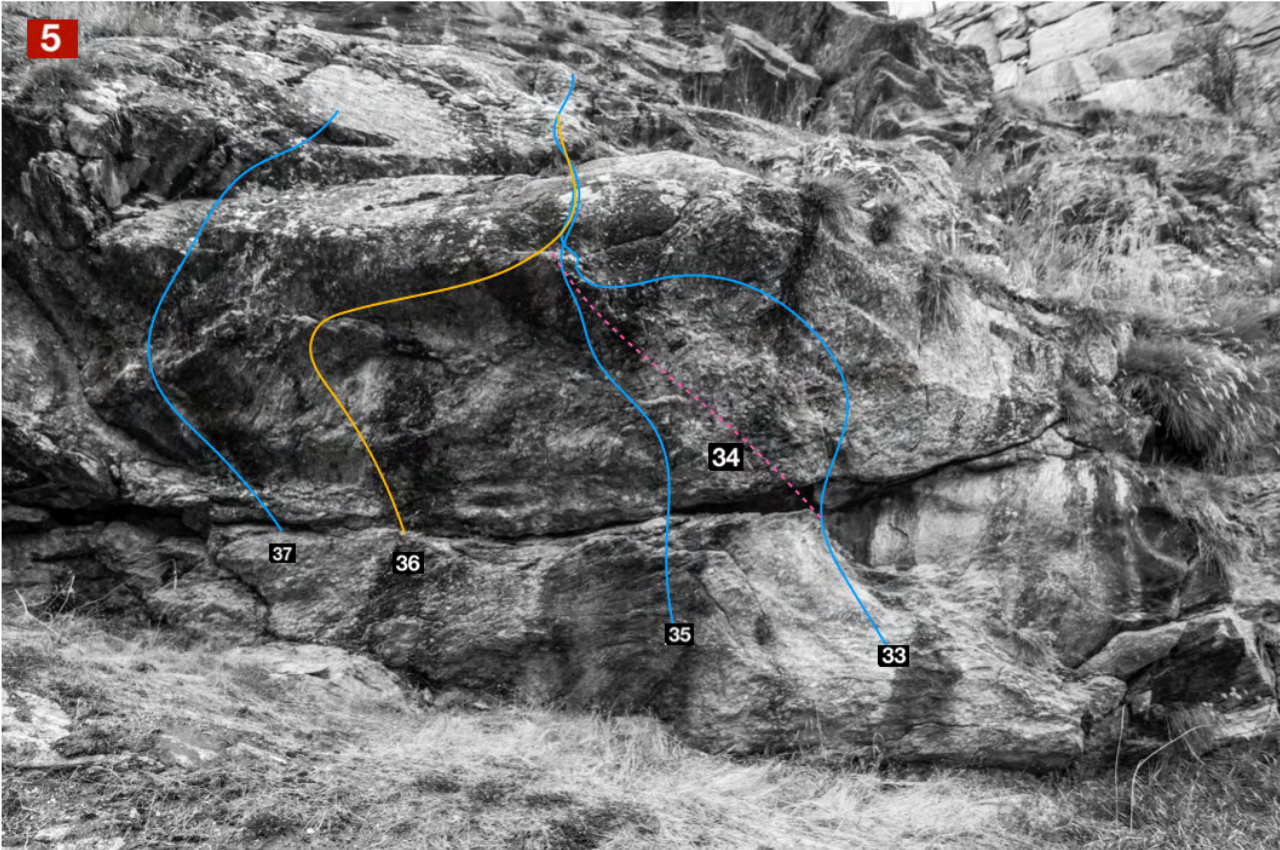




23	Harry Potter	Sit.	IV	
24	Lion King	Sit.	IV+	
25	Cars	Sit.	V	
26	Mulan	Sit.	V+	☆
27	Hercules	Sit.	6a	
28	Toy Story	Sit.	V+	
29	Pirates of the Caribbean	Sit.	V	
B	Car-Park Travers	-	-	☆

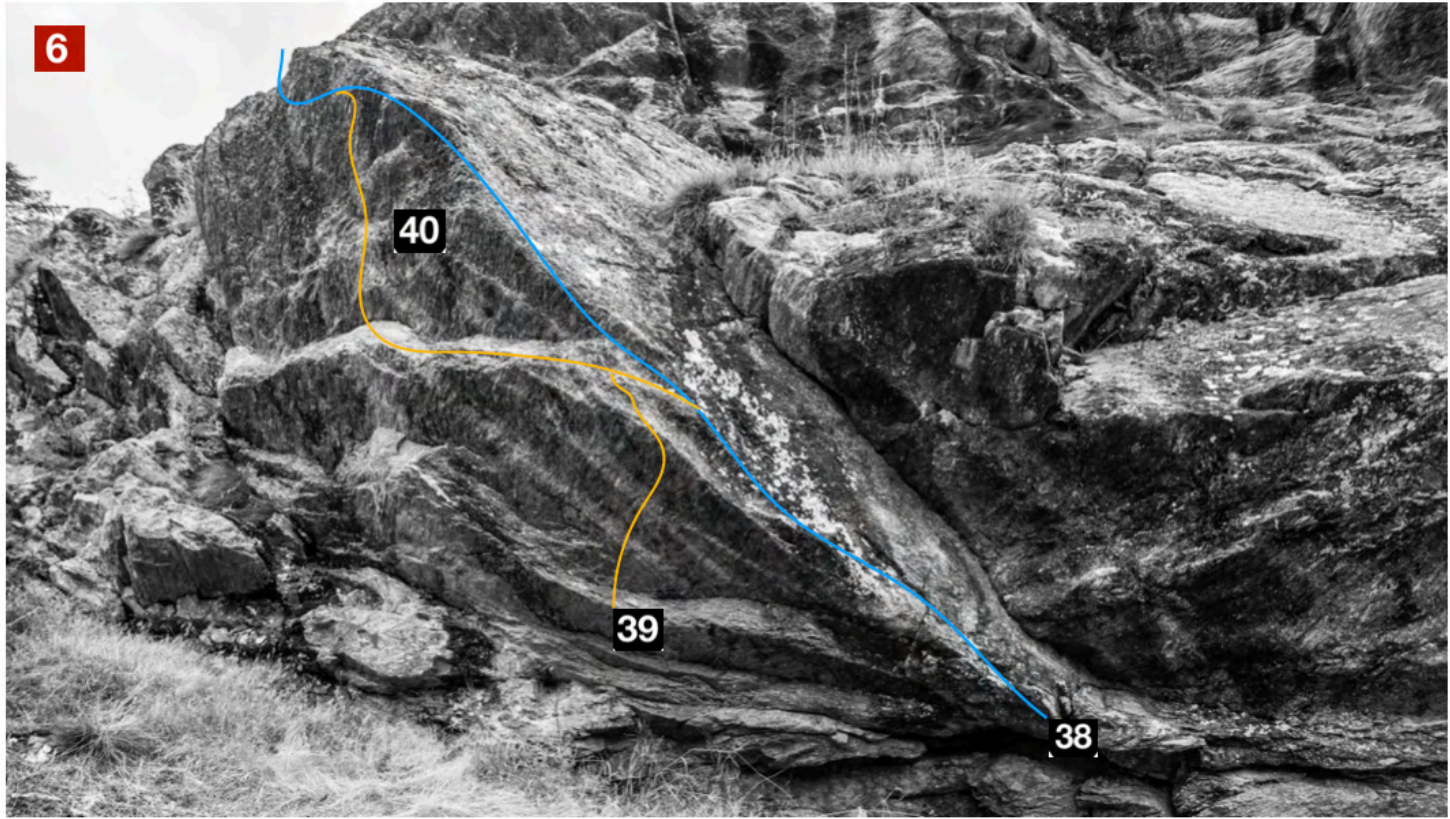


30	No sence	Sit.	6b/+	
31	Playmovil	Sit.	V+	☆
32	Nokia, connecting people	Sit.	V+	



33	Saas 6as	Sit.	6b	☆
34	El Puertón (Dyno)	Sit. Starts in 33.	6c+	
35	Hold Stronge	Sit.	6b+	
36	One move	Sit.	7a	☆
37	Holds don't Brake	Sit.	6a	

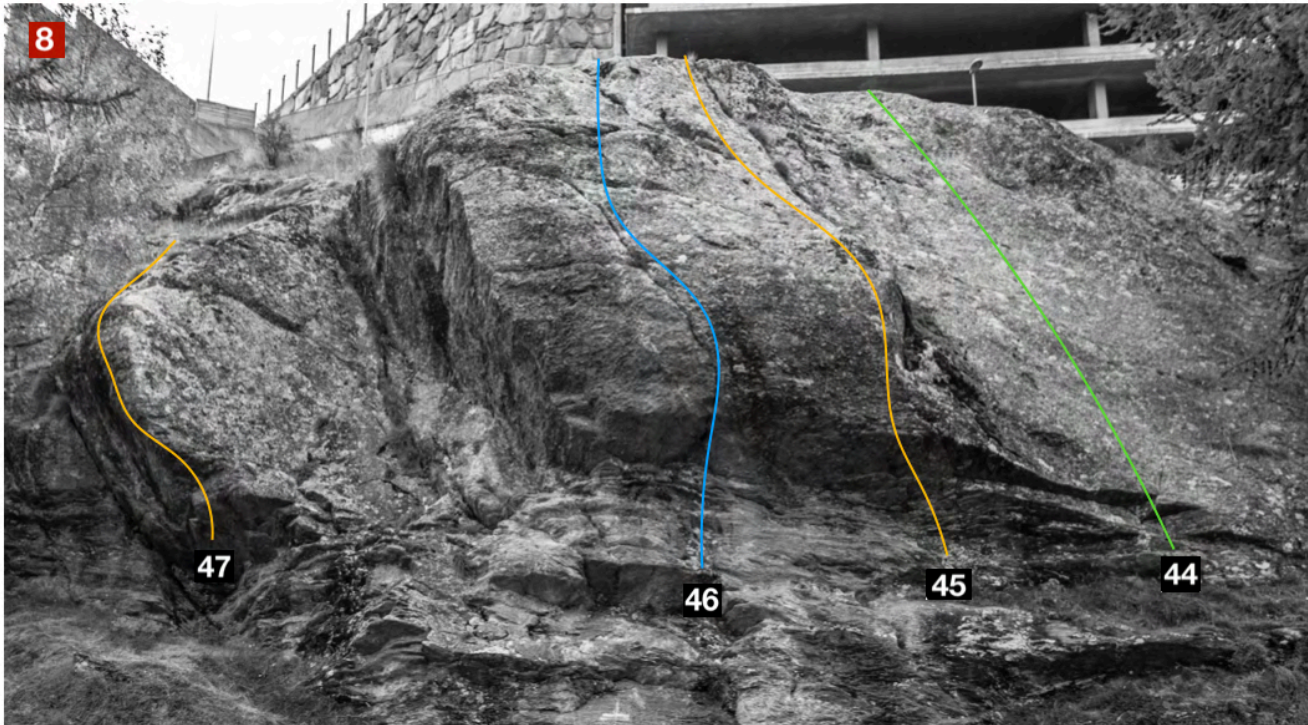
6



38	El Pico esquina	Sit. (Low) without using lower rocks.	6c	⚠	☆
39	El Santimbanqui	Sit. (crimps)	7a+	⚠	★
40	Lonely Dance	Sit. Starts in 38. Finish same as 38.	7a	⚠	☆



41	Helmet on	Stand	IV		
42	Süsskartoffeln	Stand	7a+		
43	World Cup	Stand (same exit as 42)	V+		



44	Base Technic	Stand	IV	⚠	
45	Bus stop	Stand	?	⚠	
46	KappelenCrack	Stand	6b/+	⚠	☆
47	Saas Fee Crew	Sit. Without using lower rocks	7a+	⚠	★

